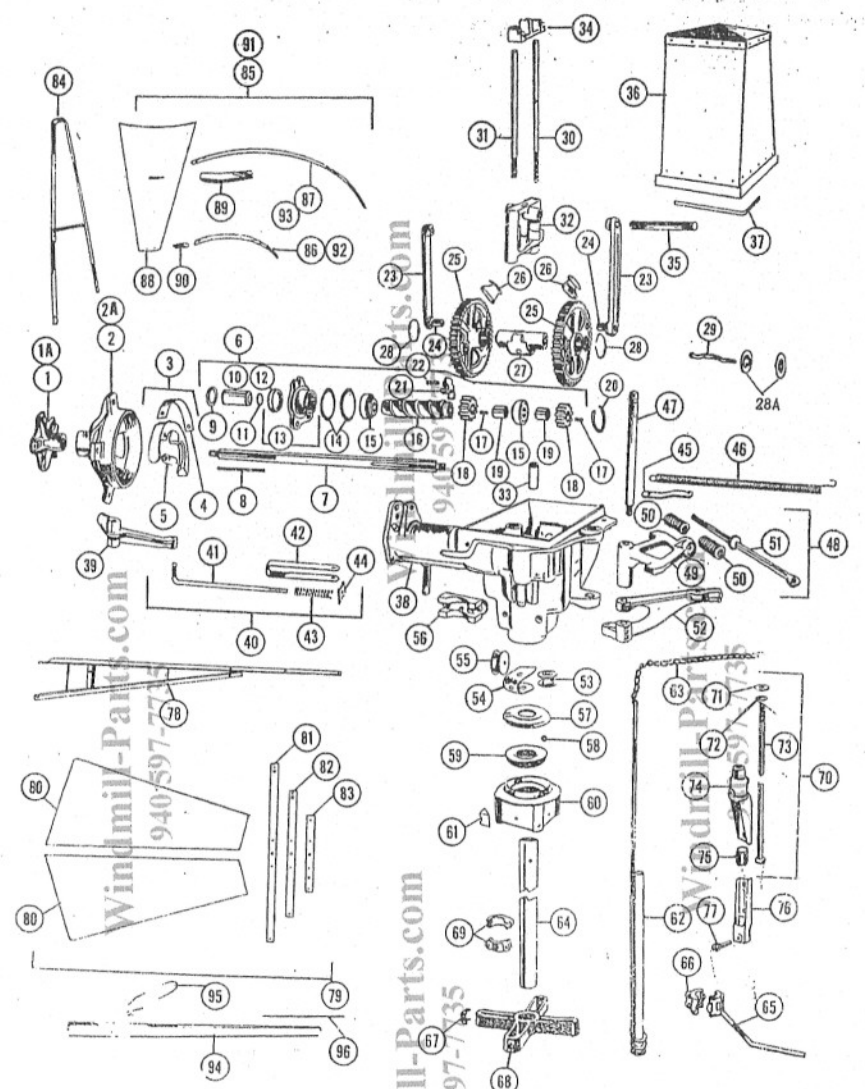


Ref. No.	Part Number	Previous Part No.	Used On & No. Used		Description
			Prior to June '52	June '52 & Later	
1	380 3 0131	1-1344A	Sub.	1	Brace Spider — for 5 Section Wheel
1A	380 3 0223	1-1344H	Sub.	1	Brace Spider — for 6 Section Wheel
2	380 3 0130	1345AS	1	1	Wheel Spider — for 5 Section Wheel
					(1) 900 00458 1/2" NF x 2-3/4" Hex Head Bolt
					(1) 900 10029 1/2" Lockwasher
2A	380 3 0174	1345	1	1	Wheel Spider — for 6 Section Wheel
					(1) 900 00458 1/2" NF x 2-3/4" Hex Head Bolt
					(1) 900 10029 1/2" Lockwasher
					(1) 900 05022 1/2" NF Hex Nut
3	380 2 0011	13118A	1	1	Brake Shoe Assembly
					(1) 900 00052 1/2" NC x 2-3/4" Hex Head Bolt
					(1) 900 10029 1/2" Lockwasher
					(1) 900 05020 1/2" NC Hex Nut
4	380 3 0025	1348A	1	1	Brake Band Only
					(2) 900 20606 1/4" x 5/8" Oval Head Rivet
5	380 3 0047	01385	1	1	Brake Spring
6	380 2 0171	(a)	1	1	Wheel Shaft Kit — Consists of Items 7 through 19
7	380 3 0196	1-1346A	(a)	1	Wheel Shaft
					(2) 900 05090 3/4" NC Slotted Hex Nut
					(2) 900 10054 1-1/2" OD x 25/32" ID x #12 Ga. Washer
					(2) 900 22014 5/32" x 1-1/4" Cotter Key
8	900 24021	1-1368	1	1	Key — 3/8" Square x 5" Long
9	380 3 0205	1373	1	1	Dust Guard Washer
10	380 3 0135	13131A	1	1	Spacer — Between Spider and Bearing
11	907 03020	1372	1	1	"O" Ring
12	901 02012	1-1369	(a)	1	Oil Seal
13	380 2 0170	1-1302A	(a)	1	End Plate with Oil Seal
					(3) 900 00020 3/8" NC x 1-3/4" Hex Head Bolt
					(3) 900 10140 3/8" Lockwasher
					(3) 900 05011 3/8" NC Hex Nut
14	380 3 0136	1319A	2	2	Gasket
15	901 00032	1347A	2	2	Bearing — Cup & Cone
15A	901 00034	1931	2	2	Bearing Cup Only
15B	901 00033	1985	2	2	Bearing Cone Only
16	380 3 0194	1303A	(a)	1	Wheel Shaft Spacer
17	900 24028	1377	2	2	Key — 3/8" Square x 1" Long
18	380 3 0195	1376A	2	2	Pinion
19	380 3 0197	1392A	2	2	Pinion Spacer Ring
20	380 3 0049	1596A	1	1	Bearing Stop Ring
21	380 3 0201	1320A	*	1	Oil Scraper
					(1) 900 00360 3/8" NC x 1-1/4" Square Head Set Screw
					(1) 900 05011 3/8" NC Hex Head Set Screw
22	380 3 0206	1314B	*	1	Oil Scraper Spring
23	380 2 0059	1310A	2	2	Pitman Assembly
					(2) 900 22019 3/16" x 1-1/4" Cotter Pin
24	380 3 0188	1315A	2	2	Pitman Pin Only
25	380 3 0190	1375A	2	2	Gear
26	380 3 0191	13107A	4	4	Oil Dipper
					(2) 900 20003 3/16" Ro x 1/2" Oval Head Rivet
27	380 3 0192	1335A	1	1	Gear Bearing
					(2) 900 00054 1/2" NC x 3-1/8" Hex Head Bolt
					(2) 900 10029 1/2" Lockwasher
28	901 04020	2	2	2	2" Extension Spool Ring
28A	380 3 0193	1336A	2	2	Gear Retainer Washer
29	380 3 0575	01311A	Sub.	1	Formed Capscrew
					(1) 900 05130 3/8" NC Slotted Hex Nut
					(1) 900 22004 3/32" x 1" Cotter Pin
30	380 3 0203	1350A	1	1	Guide Rod — Long
					(1) 900 05027 3/4" NC Hex Nut
31	380 3 0204	1351A	1	1	Guide Rod — Short
					(1) 900 05129 3/4" NC Hex Jam Nut
32	380 2 0064	1305A	1	1	Cross Head
33	380 3 0207	13113A	1	1	Pump Rod Guard
34	380 3 0189	1-1330B	1	1	Guide Rod Spacer
					(2) 900 00358 3/8" NC x 3/4" Square Head Set Screw
					(1) 900 00025 3/8" NC x 3" Hex Head-Bolt
					(1) 900 05011 3/8" NC Hex Nut
					(1) 900 05048 3/8" NC Hex Jam Nut
35	380 3 0202	1304A	1	1	Cross Head Pin
36	380 2 0068	1364A	:	:	Head
					(1) 900 10004 3/8" Flat Washer
					(1) 900 10129 Washer

Windmill-Parts.com 940 597-7735

Windmill-Parts.com 940 597-7735

Windmill-Parts.com 940 597-7735



Windmill-Parts.com 940 597-7735

Windmill-Parts.com 940 597-7735

Windmill-Parts.com 940 597-7735

Ref. No.	Part Number	Previous Part No.	Used On & No. Used		Description
			Prior to June '52	June '52 & Later	
69	380 3 0199	13798	2	2	Pipe Stem Clamp (2) 900 00026 3/8" NC x 3-1/4" Hex Head Bolt (2) 900 05011 3/8" NC Hex Nut
70	380 2 0071	01323A	1	1	Self Oiling Pump Rod Assembly — Consists of Items 71 through 75 (1) 900 22014 5/32" x 1-1/4" Cotter Pin
71	380 3 0222	13105	1	1	Leather Washer
72	900 40052	1	1	1	Washer — 1-1/8" OD x 11/16" ID x 12 Ga.
73	380 3 0221	01323A	1	1	Pump Rod
74	380 3 0220	01360B	1	1	Pump Rod Swivel (1) 900 00358 3/8" NC x 3/4" Set Screw (1) 900 05048 3/8" NC Hex Nut (1) 907 00109 Grease Cup
75	380 3 0075	001259H	1	1	Pump Rod Swivel Nut
76	380 3 0066	A20	1	1	Pump Connection
77	380 3 0071	11	1	1	Pump Pin (1) 900 22013 5/32" x 1" Cotter Pin
78	380 2 0048	1340	1	1	Vane Stem Assembly — Welded
79	380 1 0199	Sub (c)	1	1	Vane Assy — Consists of Items 80 through 83 (4) 900 00112 3/8" NC x 1" Hex Head Bolt, Plated (4) 900 05012 3/8" Lockwasher, Plated (4) 900 10025 3/8" NC Hex Nuts, Plated
80	380 3 0162	1175A	2	2	Vane Sheets (13) 900 20035 3/16" x 1/2" Flat Head Rivet
81	380 3 0159	1169A	1	1	Long Vane Cross Bar
82	380 3 0160	1170A	1	1	Med. Vane Cross Bar
83	380 3 0161	1171A	1	1	Short Vane Cross Bar
84	380 2 0049	1182A	5 or 6	5 or 6	Wheel Arm Assy — both 5 & 6 Section Wheels (3) 900 00260 3/8" NC x 1" Carriage Bolt, Plated (3) 900 10025 3/8" Lockwasher, Plated (3) 900 05012 3/8" NC Hex Nut, Plated
85	380 2 0050	1182A	5	5	Wheel Section — Consists of Items 86 through 90 — for 5 Section Wheel (1) 900 00112 3/8" NC x 1" Hex Head Bolt, Plated (1) 900 00260 3/8" NC x 1" Carriage Bolt, Plated (1) 900 00261 3/8" NC x 1-1/4" Carriage Bolt, Plated (3) 900 10025 3/8" Lockwasher, Plated (3) 900 05012 3/8" NC Hex Nut, Plated
86	380 3 0166	0136A	1	1	Wheel Circle Short — 5 Section Wheel (2) 900 20070 5/8" F.H. Rivet, Galvanized
87	380 3 0167	0137A	1	1	Wheel Circle Long — 5 Section Wheel (2) 900 20035 3/16" x 1/2" F.H. Rivet, Galvanized
88	380 3 0168	0138A	3	3	Wheel Fan
89	380 3 0095	154	3	3	Wheel Fan Plate (3) 900 20069 5/8" F.H. Rivet, Galvanized
90	380 3 0096	155	3	3	Wheel Fan Ear (2) 900 20068 5/8" F.H. Rivet, Galvanized
91	380 2 0053	156	6	6	Wheel Section for 4 Section Wheel — Consists of Items 88, 89, 90, 92 and 93
92	380 3 0698	136A	1	1	Wheel Circle — Short — 6 Section Wheel (2) 900 20070 5/8" F.H. Rivet, Galvanized
93	380 3 0696	137A	1	1	Wheel Circle — Long — 6 Section Wheel (2) 900 20035 3/16" x 1/2" Flat Head Rivet, Galvanized
94	380 3 0103	187	1	1	Pullout Lever
95	380 3 0104	186A	1	1	Pullout Lever Bolt (1) 900 00024 3/8" NC x 2-3/4" Hex Head Bolt (1) 900 05011 3/8" NC Hex Nut
96	380 3 0097	467	1	1	Pullout Wire — 30" x 30"

NOTES:

- NI Not illustrated.
- N.A. Referenced part not available for this model year & earlier.
- Sub. Will interchange entirely or with slight rework.
- * Not used.
- (a) Order Wheel Shaft Kit #380 2 0171 and the applicable Brace Spider, #380 3 0201 Oil Scraper and #380 3 0206 Oil Scraper Spring to convert to present production.
- (b) Order Item #20, Bearing Stop Ring, also.
- (c) To substitute order Item #11, Vane Hinge Pin, also.

Ref. No.	Part Number	Previous Part No.	Used On & No. Used		Description
			Prior to June '52	June '52 & Later	
37	380 3 0217		1	1	Packing for Hood
38	380 2 0057	1301A	1 (b)	1 (b)	Main Frame (1) 907 00036 1/2" Pipe Plug, Black
39	380 3 0127	1318A	1	1	Brake Lever (5) 900 10071 21/32" ID x 1-1/4" OD x #16 Ga. Washer (1) 900 22013 5/32" x 1" Cotter Pin
40	380 2 0036		1	1	Brake Rod Assembly — Consists of Items 41 through 44 (1) 380 3 0025 3/8" x 1-5/8" Drilled Rivet (2) 900 22013 5/32" x 1" Cotter Pin
41	380 3 0118	01332	1	1	Brake Rod
42	380 3 0021	1533	1	1	Brake Rod Clevis
43	380 3 0022	1595	1	1	Brake Rod Spring
44	380 2 0183	1531	1	1	Brake Rod Guide Washer
45	380 3 0045	1280	1	1	Regulating Spring Arm (1) 900 00018 3/8" NC x 1-1/4" Hex Head Bolt (4) 900 05011 3/8" NC Hex Nut (1) 900 10140 3/8" Lockwasher
46	380 3 0083	1664H	1	1	Regulating Spring
47	380 3 0124	01312	1	1	Vane Hinge Pin — for Welded Vane (1) 900 00114 3/8" NC x 1-1/2" Hex Head Bolt, Plated (1) 900 10025 3/8" Lockwasher, Plated (1) 900 05012 3/8" NC Hex Nut, Plated (1) 900 10006 1/2" Flat Washer (1) 900 10029 1/2" Lockwasher (1) 900 05042 1/2" NC Hex Nut
48	380 2 0044		1	1	Bumper Assembly — Consists of Items 49 through 51 (1) 900 00112 3/8" NC x 1" Hex Head Bolt, Plated (1) 900 05012 3/8" NC Hex Nut, Plated (4) 900 10025 3/8" Lockwasher, Plated
49	380 3 0140	1216	1	1	Bumper Arm
50	380 3 0142	1263	2	2	Bumper Spring
51	380 2 0043	1234	1	1	Bumper Rod (1) 900 05020 1/2" NC Hex Nut (2) 380 3 0141 Bumper Spring Washer
52	380 3 0200	307A	1	1	Pullout Arm
53	380 3 0183	1309B	1	1	Chain Sheave (1) 900 22013 5/32" x 1" Cotter Pin
54	380 3 0186	1308A	1	1	Chain Sheave Guard
55	380 3 0184	1324A	1	1	Chain Roller (1) 900 00025 3/8" NC x 3" Hex Head Bolt (1) 900 10140 3/8" Lockwasher (1) 900 05011 3/8" NC Hex Nut
56	380 3 0185	1327A	1	1	Pipe Stem Clamp (2) 900 00078 5/8" NC x 4-3/4" Hex Head Bolt (4) 900 05023 5/8" NC Hex Nuts
57	380 3 0215	1155	1	1	Upper Ball Race
58	907 02004		15	15	Steel Balls — 3/4"
59	380 3 0216	1156	1	1	Lower Ball Race
60	380 3 0225	1157	1	1	Bed Plate (4) 900 00049 1/2" NC x 2" Hex Head Bolt (4) 900 05020 1/2" NC Hex Nut
61	380 3 0068	1091	1	4	Inside Corner Washer
62	380 2 0054	001352A	1	1	Pullout Tube Assembly
63	380 3 0178	1102	1	1	Pullout Tube Chain Only (1) 903 02009 Open Link
64	380 2 0055	1378A	1	1	Pipe Stem
65	380 2 0023	01366A	1	1	Pullout Swivel Assembly
66	380 3 0065	01366B	1	1	Pullout Swivel — Wire Side (2) 900 00009 5/16" NC x 1-1/4" Hex Head Bolt (2) 900 10023 5/16" Lockwasher (2) 900 05008 5/16" NC Hex Nut
47	380 3 0067	1-109	Sub.	4	Outside Corner Washers
58	380 3 0224	508B	1	1	Storm Stay (4) 900 00022 3/8" NC x 2-1/4" Hex Head Bolt (4) 900 10004 3/8" Flat Washer (4) 900 10025 3/8" Lockwasher (4) 900 05012 3/8" Hex Nut, Plated